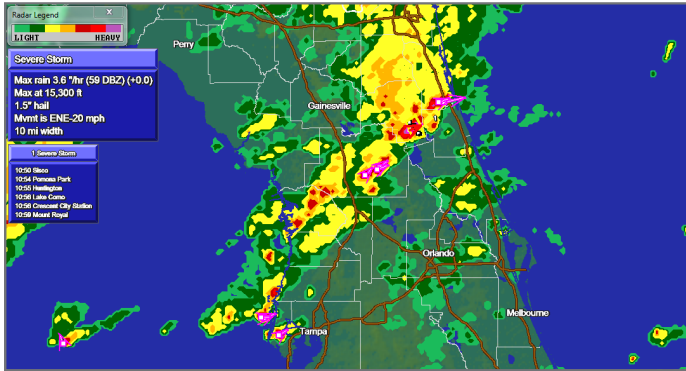


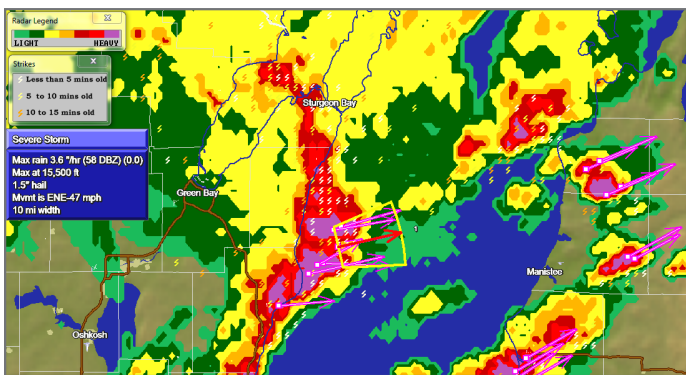
BARON MOBILE THREAT NET

Not every storm happens in an area with dependable Wi-Fi or cellular data service. When public safety is a concern and response time is critical, Baron Mobile Threat Net® helps emergency crews and storm spotters get to the right locations safely, with mission-critical weather data delivered by satellite.



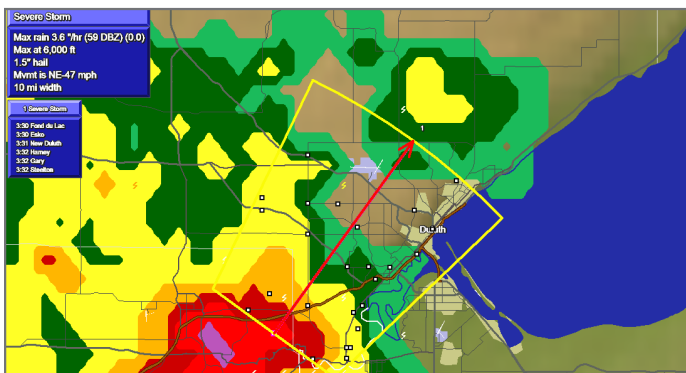
Critical Weather Intelligence for Your Location

Monitor severe weather on a street-level map with nationwide NEXRAD radar, lightning, satellite and value-added data, like Baron's patented storm tracks. Simply click a storm track, and communities in the path of severe storms and tornadoes are instantly displayed, along with estimated times of arrival. You can also overlay your current position on the map using our integrated GPS device.



Weather Data Anytime You Need It

Never again worry about data delivery issues linked to power, Internet and cell phone outages. Mobile Threat Net uses a reliable signal from XMWX Satellite Weather®, strong and resistant to signal loss due to rain fade. And since the data is satellite-delivered, you don't need an Internet connection to receive accurate weather information.



Instant Access to Quality-Controlled Data

Rigorous quality control by the Baron staff of degreed meteorologists means you receive the most up-to-date and accurate weather information. Designed for high-stress situations, Mobile Threat Net's easy point-and-click interface delivers data to you quickly and efficiently.

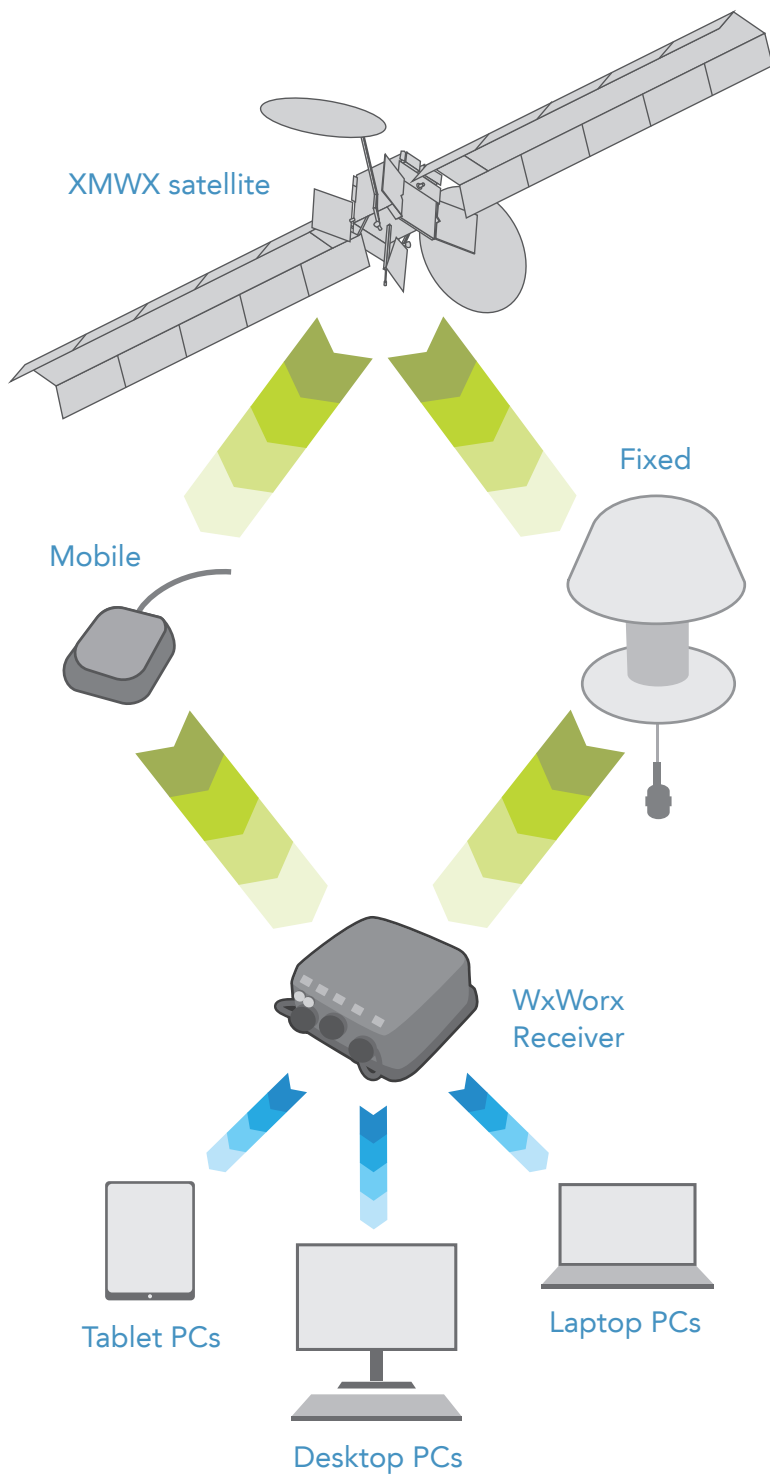
Configured for Your Needs

The system runs on almost any Windows PC, and comes with a portable data receiver, allowing you to easily connect the system in your vehicle or office. Enjoy a variety of connectivity options, including USB and wireless Bluetooth.

“ I've been very pleased with Mobile Threat Net...We saw dangerous weather on Mobile Threat Net and were able to give the schools adequate time to shelter children in the hallway during a tornado. Had we released the kids to go home prior to my alert, we would have had them on the roads and probably had injuries and fatalities. ”

Rusty Chase, Emergency Management Coordinator,
Isle of Wright County, VA





MOBILE THREAT NET
RESPONDER

\$99.99/month

- High Resolution NEXRAD Radar
- Severe Weather Storm Tracks
- Precipitation Type (at Surface)
- Lightning
- NWS County Warnings with Polygons
- Winds Aloft
- Surface Observations for U.S. and Canada (METARs)
- City Forecasts
- U.S. and Canada Marine Zone Forecasts
- Hurricane Track
- Surface Pressure
- Surface Pressure Forecast: 12, 24, 36
- Surface Wind Speed/Direction
- Surface Wind Forecast: 12, 24, 36
- Sea Surface Temperatures
- Wave Height/Direction/Period (Pacific, Atlantic, Gulf & Great Lakes)
- Wave Forecast: 12, 24, 36
- Buoy Data
- Visibility
- Visibility Forecast: 12, 24, 36
- Satellite Mosaic
- Radar Coverage
- Wind Shear Detection
- Severe Thunderstorm & Tornado Watch Boxes
- Storm Prediction Center Mesoscale Discussion
- Storm Prediction Center Day 1 Convective Outlook
- TAFs for U.S. and Canada
- Surface Analysis Weather Maps
- Echo Tops
- Canadian Winds Aloft

*One-time activation fee of \$100. The Master Mariner data subscription plan is also available at a lower cost.

For details and to subscribe, contact Cliff Windham at 256-881-8811 or via email at cliff.windham@baronweather.com

All software is compatible with most PCs with the following specifications:

- Operating system:** Windows 2000, XP, Tablet PC, Vista, 7 or 8
- Processor:** 800 MHz minimum
- RAM:** 512MB
- Hard disk space:** 350MB
- Drive:** CD-ROM
- Port:** 1 USB minimum

